

Krosno - Light Garden

Institute: Institute of Cities and Regions Design - Chair of Spatial Planning and Environment Protection

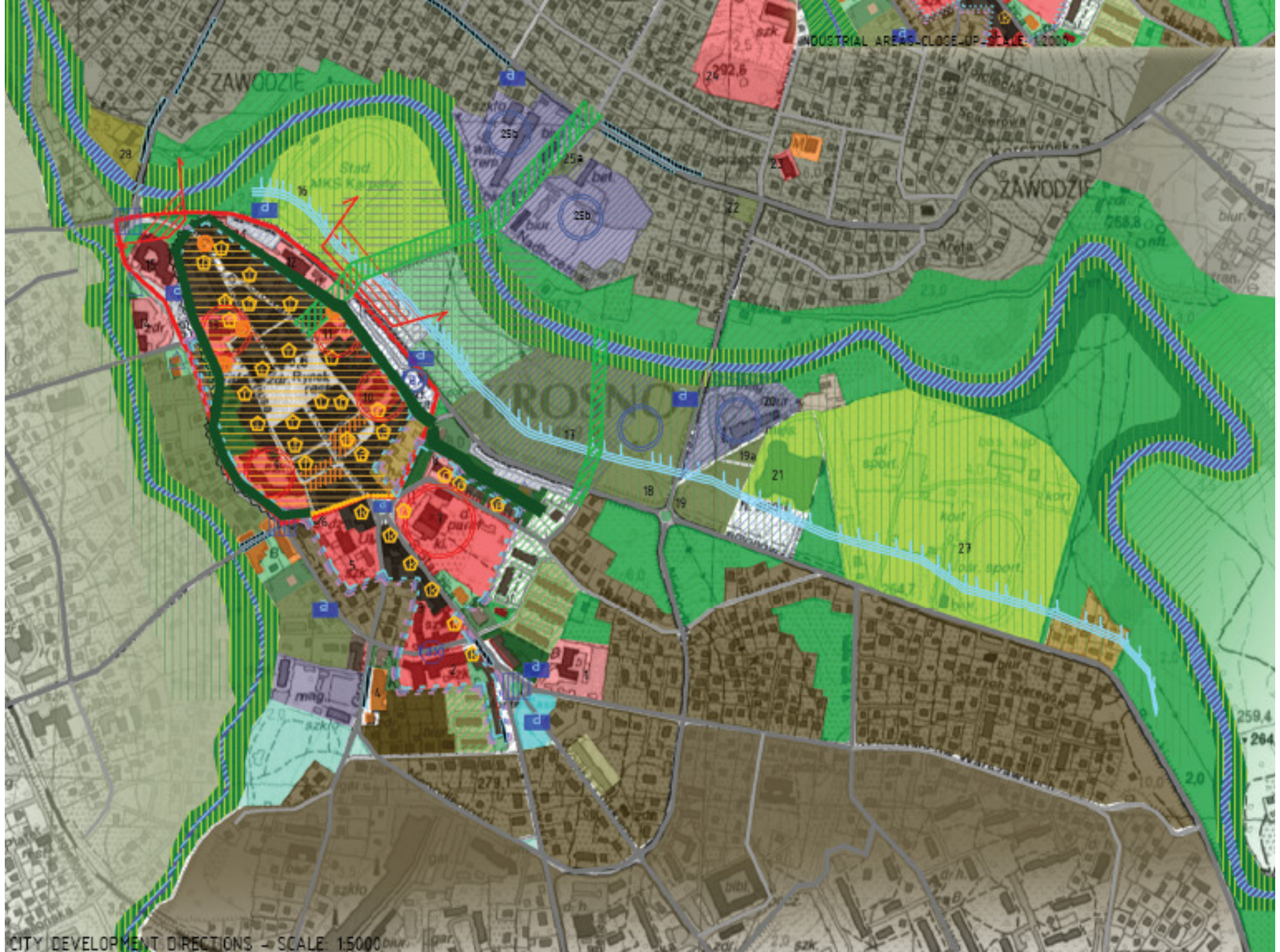
Author: Urszula Nowacka - Rejzner PhD, Arch., Patrycja Siuzdak Eng. Arch., Elżbieta Węclawowicz-Bilska Prof. PhD, Arch., Anna Żubrowska Eng.Arch.; Year: 2014

Krosno is a town and county in Subcarpathian Voivodeship in Poland. Krosno is a medieval fortified town, a former Royal Free Town and until recently it was a provincial capital. Today it is a medium-sized town with a population of fifty thousand, ranking sixth among Polish towns with the best living conditions. Krosno is on the river Wisłok. Slovakia is about 40 kilometres south, and Ukraine is about 85 kilometres east of the city. Krosno is located in an oil bearing region. Surface seepage of oil was locally used in lamps as early as the 16th century. In the 19th century Ignacy Łukasiewicz a local pharmacist began exploiting the deposits from hand-dug wells and Krosno became site of the first oil well in the world opened in 1854. Another thing that Krosno is well known for is the quality glassware and crystal that is produced in the town, and distributed throughout the world



EXISTING STATE FUNCTIONAL ANALYSIS - SCALE 1:5000




INDUSTRIAL AREAS - CLOSE-UP - SCALE: 1:2000

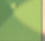








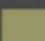



CITY DEVELOPMENT DIRECTIONS - SCALE: 1:5000

KEY: Riverside brownfields development project
scale 1:5000:

-  large mill wheel "GLASS EYE"
-  recreation and exhibition areas
-  "LIGHT GARDEN" area
-  park areas
-  MKS Karpaty stadium
-  MOSiR sports and recreation areas
-  sports hall
-  "LIGHT GARDEN"
-  lawns adjusted to walk on them with single trees
-  innovative illumination solutions to improve safety and visibility on areas with frequently appearing mist

-  Designing of a pedestrian-cycling strip connecting the old town with the Zawdzie estate
-  bus stops
-  Parking lots

-  park greenery of varied altitude
-  small tourism infrastructure improvement possibility, e.g. view arbours, signing of these points
-  riverside greenery that is a biological casing of the Wisłok and Lubafówka rivers watercourses, preserved and replenished with an additional natural greenery
-  green areas, flood areas
-  existing watercourses kept in its natural location (its possible to make use of these landscape elements for tourism and recreation)
-  big compact clusters of single-family houses, most of them 2nd storey high, hipped and ridge roofs, fenced estates, often with adjacent greenery

-  organized greenery – mostly lawns and flower beds
-  single-family houses building on the Lubafówka river
-  green areas in the city centre/between blocks – mostly lawns and single trees
-  commercial services objects
-  single single-family houses building with adjacent greenery, fenced, mostly 2 storeys, their location is a result of former city built-up phases

-  public services objects i.e. museums
-  public services objects i.e. schools
-  public services objects i.e. churches
-  suburban single-family house building, sometimes in clusters
-  many-family houses building with services on the ground floors
-  quarterly building, historical, with services on the ground floors

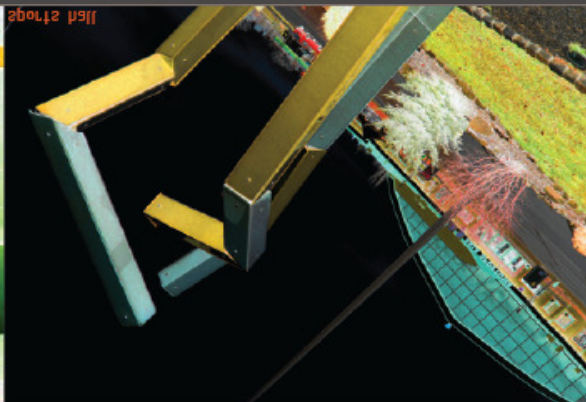


PROJECT - SCALE 1:5000

GLASS ROUTE:

Continuation and development of the existing Glass Architecture Route in Krosno:

- combining sculptures with a well signed route – distinctive floor, illumination
- the glass route consists of 11 sculptures connected to the history of Krosno, they are located in the city's most important spots e.g. city entry, main square, sports hall, station
- on the route is located the Glass Legacy Centre, in which visitors may take a look at the history of glass in Krosno and all of the glass production stages



HISTORICAL ROUTE:

Project of a historical route, that facilitates visiting for tourists:

- signed route - the characteristic colour of the floor - created by combining spots, that are Krosno's monuments
- at each object there will be a board with a short story of the object

■ - museums in the Old City area:

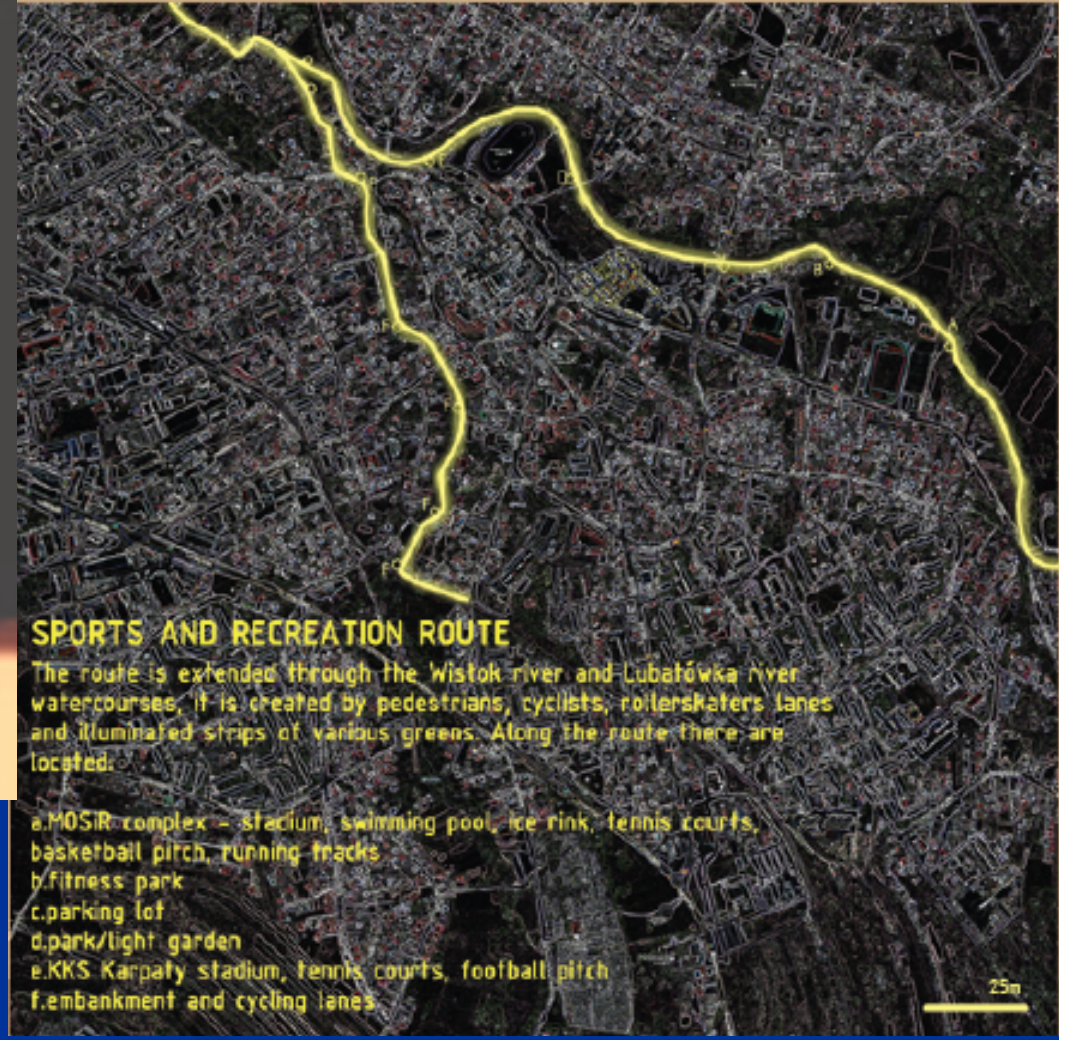
- 1.Museum of Subcarpathia in Krosno
- 2.Museum of Craftmanship in Krosno
- 3.Glass Legacy Centre



ROUTE OF SPORTS AND RECREATION

The project of the route is mainly adjusted to people who practise or like to stroll:

- lanes for various users e.g. pedestrians, cyclists, rollerskaters
 - well illuminated areas with a suitable surface e.g. asphalt-cyclist, pavement-pedestrians
 - guaranteed recreational surroundings - lots of greenery; peace and quiet, screens formed by plants, lawns - usable greenery, properly cut high trees, to provide safety
 - neighbourhood of watercourses - well maintained and illuminated, saving the neighbourhood areas from floods
- project

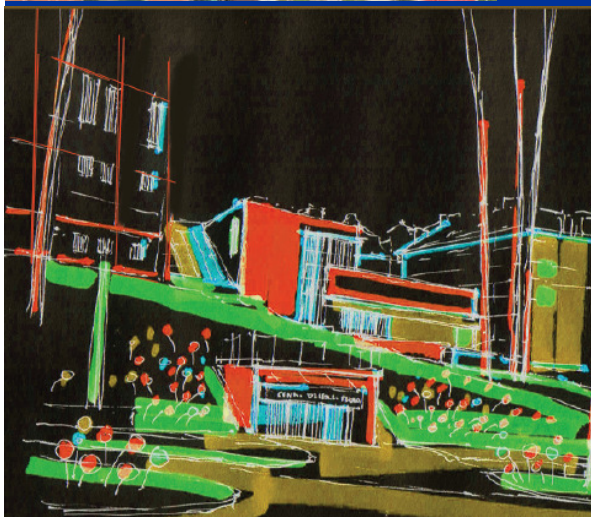


SPORTS AND RECREATION ROUTE

The route is extended through the Wistok river and Lubatówka river watercourses, it is created by pedestrians, cyclists, rollerskaters lanes and illuminated strips of various greens. Along the route there are located:

- a.MOSiR complex - stadium, swimming pool, ice rink, tennis courts, basketball pitch, running tracks
- b/fitness park
- c.parking lot
- d.park/light garden
- e.KKS Karpaty stadium, tennis courts, football pitch
- f.embankment and cycling lanes

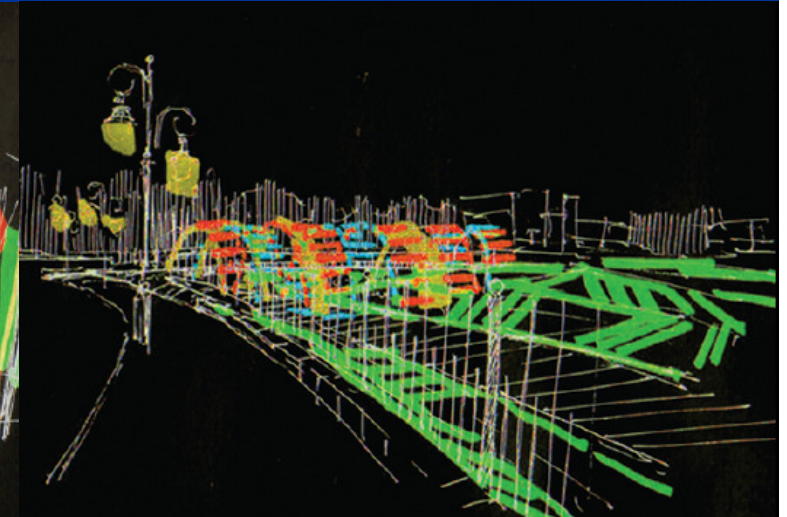
25m



Glass Legacy Centre, Legionow st.



Old Town - Glass Legacy Centre



view, Okrzei st.



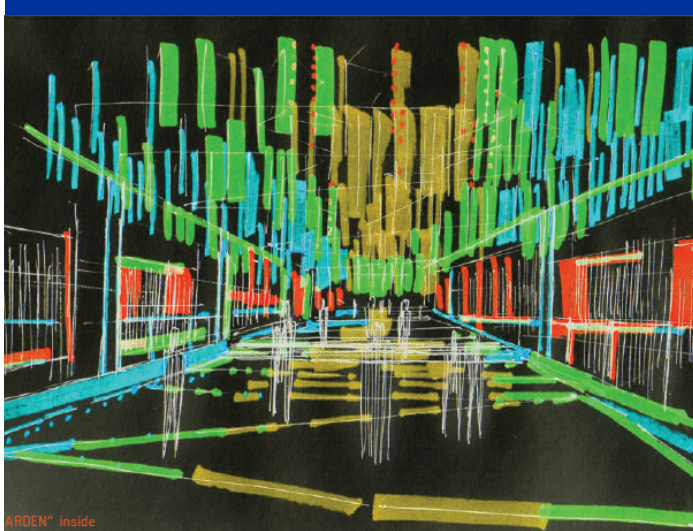
PUBLIC TRANSPORT ROUTE

Creating public transports bus stops in important places in the old town area. Connecting the stops with driving, cycling, pedestrians lanes. Using of the existing tourists train from the Glass Legacy Centre, that would be moving along the route showing the city to the visitors.

Bus stops:

- a. Legionów St.
- b. S. Okrzei St.
- c. S. Żółkiewskiego St.
- d. Niepodległości St.
- e. Wistocza St.
- f. S. Szażycia St.
- g. Wojska Polskiego St.
- h. Grodzka St.
- i. Tkacka St.
- j. Podwale St.

25m



ARDEN™ inside



LIGHT GARDEN™ inside



Light Garden Project:

- using of brownfields and adapting them to a garden full of glass sculptures and plants illuminated in different colours creating a composition. Whole would be connected with many paths and bridges over the river
- there will be few entrances to the garden. Entry ticket could be bought in the Glass Legacy Centre, that would allow to visit both the Centre and the garden or each of them separately
- whole garden will be fenced, at daylight it will be possible to admire colourfull glass sculptures and plants, and from twilight to 10/12 p.m. illuminations that use little architecture and the gardens greenery
- the garden will be connected with all of the routes, so finding it won't be difficult.

The Light Garden project combines everything that is most precious for inhabitants of Krosno. The city itself, its history, traditions are the main inspirations to create any objects. Because of that it can be safely said that the garden that performs specific functions becomes a true picture and symbol of the city. Its a place that takes what's best from Krosno, and is inspired by its history, tradition of glass manufactory, oil industry but also promotes the city, so every visitor knows what the history of Krosno is.



LIGHT GARDEN PROJECT PATTERN

