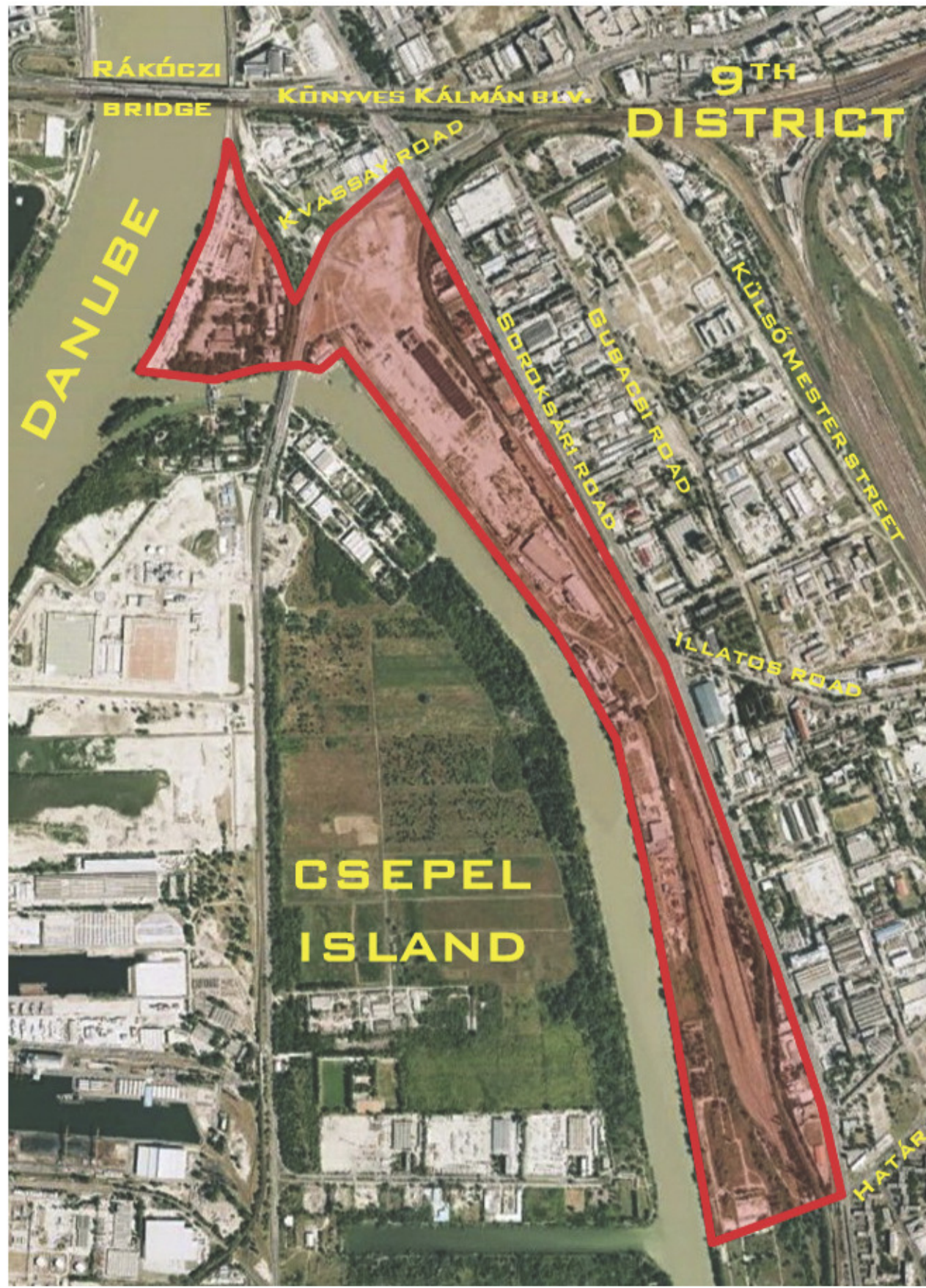


THE BUDAPEST WATERFRONT – A CONNECTION POINT

OUR AIM IS TO CREATE A CONTEMPORARY LANDMARK FOR THE CITY OF BUDAPEST
A NEW CITY WITHIN THE CITY



EVERY EXCITING CITY IS BUILT UPON OF LAYERS OF TIME. ITS ICONS AND SYMBOLS ACCUMULATED THROUGH CENTURIES OF HISTORICAL AND CULTURAL EXPERIENCES. WHAT LENDS BUDAPEST ITS EXCEPTIONAL PANORAMA AND CHARACTER, IS BOTH ITS LOCATION ALONG THE RIVER DANUBE AND THE STRING OF SPECTACULAR BUILDINGS THAT LINE BOTH BANKS OF THE RIVER AND THE RHYTHM OF THE BRIDGES THAT CROSS IT. THE URBAN BROWN FIELD PROJECTS, IN THE HEART OF EUROPE, WILL ADD TO THE CENTURIES-OLD ARCHITECTURAL HERITAGE OF THE CITY BY CREATING ICONIC LANDMARK DESIGNS FOR CONTEMPORARY BUDAPEST. THE DISTRICT WILL HAVE ITS OWN UNIQUE IDENTITY WITH ARCHITECTURE AND SERVICES THAT REFLECT THE SPIRIT OF THE FIRST PART OF THE 21ST CENTURY, WHILE CONTINUING BUDAPEST'S RICH ARCHITECTURAL TRADITIONS.



WING KFT, DUNAPASSAGE

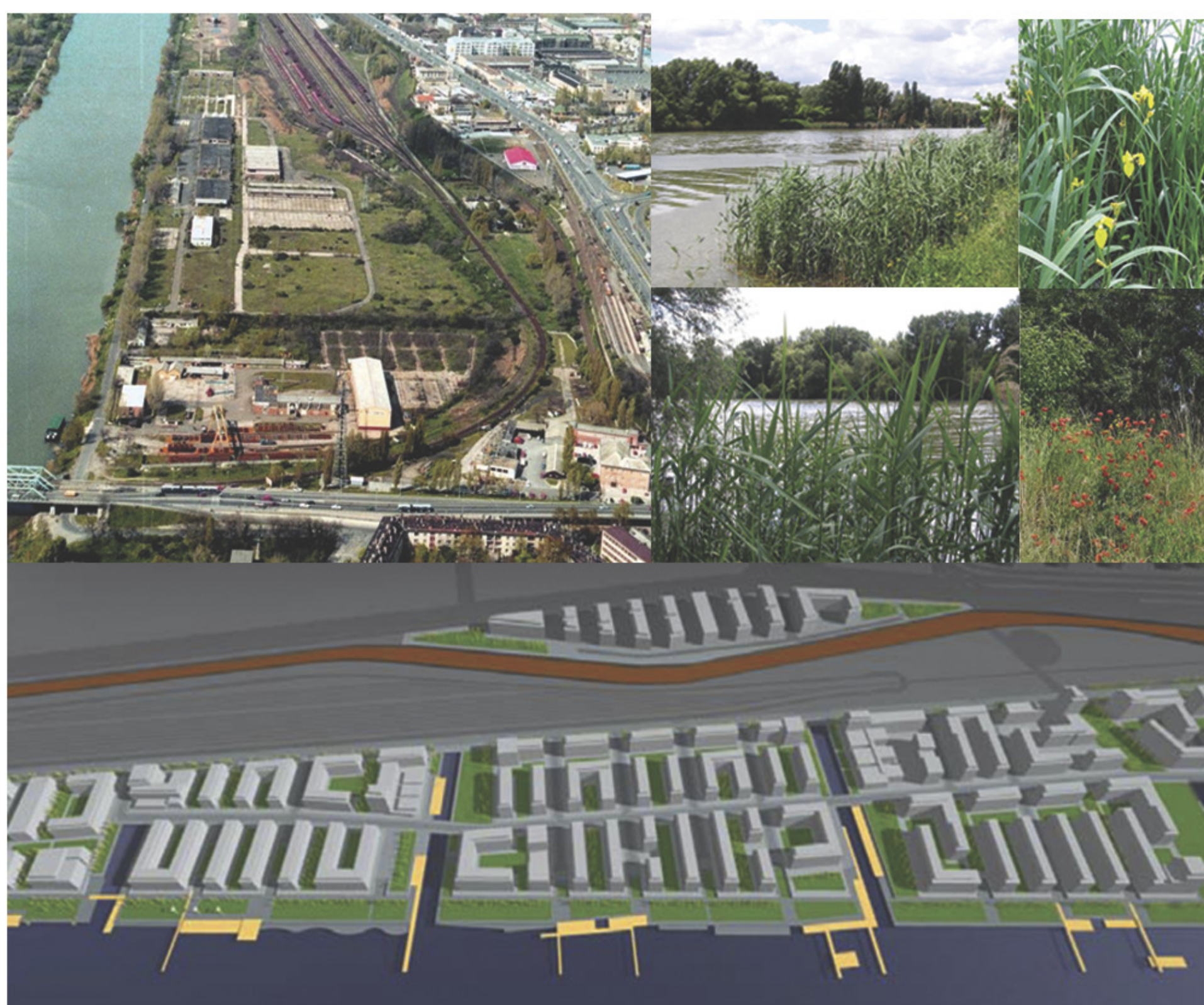
DUNACITY KFT

A PLACE WHERE THE CITY BELONGS TO THE RIVER

THE BROWNFIELD PROJECTS WILL CREATE A NEW DISTRICT AT THE SOUTHERN GATEWAY OF BUDAPEST, WHERE WATER, NATURE AND THE CITY MEET. DEMONSTRATED ATTRACTIONS OF THE AREA INCLUDE THE NEARBY INFOPARK, WITH ITS OFFICE AND UNIVERSITY BUILDINGS, THE HUNGARIAN NATIONAL THEATRE AND THE PALACE OF ARTS. THESE PUBLIC PROJECTS WERE FOLLOWED BY SUCCESSFUL PRIVATE REAL ESTATE DEVELOPMENTS. URBAN BROWN FIELD PROJECTS BECAME THE REAL ESTATE MARKETS LOGICAL RESPONSE TO FURTHER DEVELOPMENT IN THIS AREA, WHICH IS LOCATED AT THE AXIS OF SOUTHERN BUDAPEST'S PRIMARY TRANSPORTATION ARTERIES. THE PROJECT LOCATION FEATURES AN EXCEPTIONAL CONTINUOUS AREA COMPRISING 114,3 HECTARES, 4,1 KILOMETRE OF RIVERFRONT, AND WELL-REGULATED WATER LEVELS.



A CITY DEVELOPMENT PROJECT



VÁROS-TEAMPANNON KFT.

THE ENVIRONMENTAL DEVELOPMENT OF THE URBAN BROWN FIELD WILL BE CARRIED OUT IN CLOSE CO-OPERATION AMONG REAL ESTATE DEVELOPERS AND THE CITY COUNCIL OF BUDAPEST'S 9TH DISTRICT. THE PROJECT WILL DEVELOP IN CLOSE CO-ORDINATION WITH THE BUDAPEST CITY COUNCIL'S MIDTERM CITY DEVELOPMENT PROGRAM. A FEW EXAMPLES OF DEVELOPMENT THAT WILL ENHANCE THE INTEGRITY OF THE AREA INCLUDE THE NEW METRO LINE (METRO 5), AN INTERNATIONAL PORT, AND A NEW BRIDGE BUSTLING WITH TRAFFIC. ALONG WITH THE CAPITAL CITY COUNCIL'S NEW PUBLIC PARK OPPOSITE THE DANUBE'S CSEPEL ISLAND, WHICH WILL BE CONNECTED BY PEDESTRIAN BRIDGE FROM THE DUNA CITY PROJECT. DUE TO ITS LARGE SCALE, URBAN BROWN FIELD PROJECTS WILL PLAY A SIGNIFICANT PART IN THE ECONOMIC DEVELOPMENT OF BUDAPEST INCLUDING THE REVITALISATION OF THE EASTERN BRANCH OF THE RIVER AND TWO NEW TRAMLINES. THIS GROUND-BREAKING PROJECTS WILL SERVE AS A GATEWAY, MAKING IT POSSIBLE FOR PROJECT PARTNERS TO ENTER THE EUROPEAN MARKET ECONOMY THROUGH CONNECTION WITH VARIOUS STATE ADMINISTRATION PROGRAMS AND A NETWORK OF ORGANISATIONAL PARTNERSHIPS.

